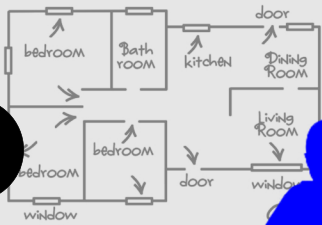


WINDOW SAFETY TIPS

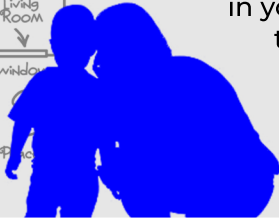
FIRE ESCAPE DRILLS

A home fire can start quickly, with little time to safely escape. The Window Safety Task Force encourages everyone to develop and test an escape plan at least twice a year, including accommodations for loved ones with special needs and pets.

1



Create a fire escape plan that includes two exits from every room in your home, through a door and a window.



Attempt to open a window first, rather than break the glass, if you must exit through it in an emergency.

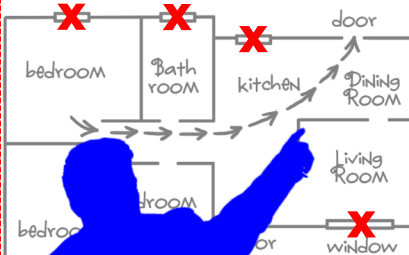


4

2



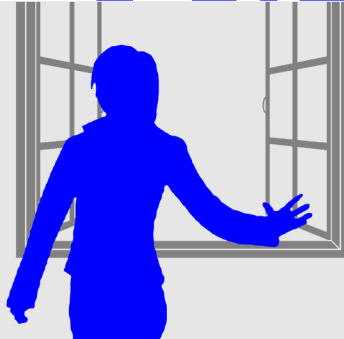
Practice your fire escape plan during the day and at night, as many home fires occur at night.



Open the window or choose another exit route if your home features windows with impact resistant glass, common in hurricane-prone areas.

5

3



Practice opening and closing windows that may be designated as emergency exits.

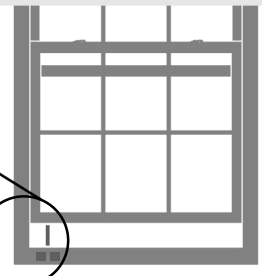
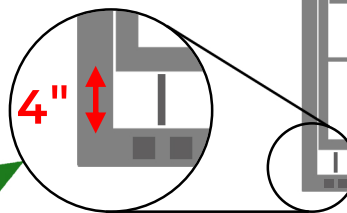


Check with local code officials when replacing your windows to understand emergency escape and rescue (egress) building code requirements.

6

7

Consult your local building code official to determine proper placement of window guards or fall prevention devices. Look for devices that comply with ASTM F2090.



For more information, visit

FGIAonline.org/WindowSafety

* Fire escape plan image from "Look Out for Kids" activity book by Andersen Corporation.